



The Association of Insurance Professionals

Dear Fellow NAIW Colleagues,

In preparation for the April, 2010 Regional Conference in Manchester, NH, the Hospitality Team has been busy selecting various local activities which you may be interested in joining during your "off" hours. Well, it turns out that there are several great venues in Manchester, so we thought we'd give you a listing and description of each and ask each of you to indicate which ones you would be interested in signing up for. Please Email me letting me know which activities you may want to participate in by **March 1, 2010**. This way, we will have a good idea of the number of people who are interested in which event and we will be able to try to arrange for group discounts and/or transportation if necessary. Tour direction will be available for individualized guidance if required. My Contact information is:

Work Email:	Vanessa_Gladkowski@NASINS.com
Work Phone:	800-542-9200, ext. 228
Home Email:	lmglad@Metrocast.net
Cell Phone:	603-540-7817

Looking forward to seeing everyone!

Sincerely,

Vanessa E. Gladkowski
North American Specialty Insurance Company
650 Elm Street
Manchester, NH 03101

THURSDAY CULTURAL EVENTS

FRANCO AMERICAN CENTRE:



Art Gallery/Museum/Library. Ongoing exhibits showcasing the works of French and Francophone artists. Leading source of information about French culture, heritage and history in North America. Joe Maltais french record collection. French conversation classes. Artist Elise Khol exhibit is scheduled daily from March through April, 2010. Pastel exhibit will feature Nuns in their humorous, strange, and "not so nice" personas. If we have a large enough interest, we will arrange for a private showing of the exhibit. www.francoamericancentrenh.com

Admission: Free

Departure time: 2pm

THE CURRIER MUSEUM OF ART, MANCHESTER, NH



Stroll through the numerous galleries to see American and European art ranging from the Renaissance to current day and enjoy the Currier's extensive collections of paintings, sculpture, furniture, glass, and ceramics. Private tours can be arranged, or if you prefer, you can tour the museum at your leisure. Additionally, the Museum owns and operates the Zimmerman House which was completely designed, constructed and decorated by Frank Lloyd Wright. The Frank Lloyd Wright House is located away from the museum property, so transportation to and from would need to be coordinated.

www.currier.org

Rates: Adults \$18, Senior \$17, Student \$16, Children 7-17 \$8

Departure time: 3 pm

THE MILLYARD MUSEUM AND RESEARCH CENTER:

The Millyard Museum is a very easy walk from the Raddisson Hotel. It is located along the banks of the Merrimack River and can be seen from the hotel itself.

This museum highlights the history of the Amoskeag Mills and incorporates the depiction of many of its workers there. You can walk the length of the Mill (one mile long), or you can request a private tour of the facility. Reservations are required for tours.

www.history@manchesterhistoric.org

Rates: Adults \$12, Seniors & College Students \$10

Children 6-18 \$4, Under 6 – free

Departure time: 1 pm



FOR ALL YOU SHOPPERS

(We have plenty of shopping opportunities for you in [tax-free New Hampshire](#))

THE MALL OF NEW HAMPSHIRE:

Approximately five miles from the Raddisson, the Mall of New Hampshire houses over 125 stores including Macy's, J.C. Penneys, Best Buy, Sears, Old Navy, etc. Also, there are specialty stores, kiosks and multiple dining choices. The mall also offers 4 full-service restaurants, and a 550-seat food court.

Shuttle service will be available to take you back and forth from the hotel. There will be limited space so you will need to sign up in advance.

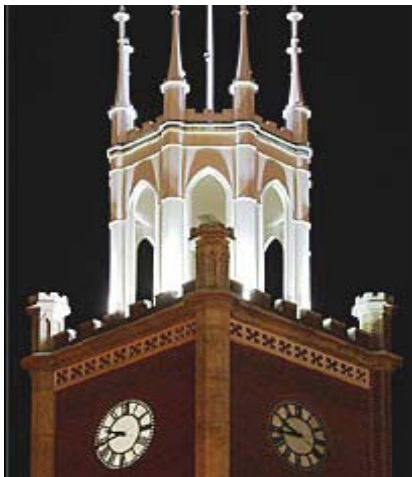
Transportation schedule:

<u>Leaving the hotel</u>	<u>Picking up at the Mall</u>
11:00 am	1:30 pm
1:00 pm	3:30 pm
3:00 pm	5:30 pm

(These are tentative times at this point. Check in at our information booth near conference registration upon arrival for finalized time frames.)

OR

SHOPPING DOWNTOWN MANCHESTER:



If you prefer to get outside and breathe in some fresh air, just walk out the front door of your hotel and enjoy wonderful downtown Manchester.

Many stores are located on Elm Street, or are in the immediate area of Elm Street in Manchester and most are just a few steps away from the Raddisson Hotel. Listed below is a "selection" of the many stores available for you to visit.

Bentons' Shoe and Apparel Store

814 Elm Street • Manchester, NH

Voted Best Shoe Store North of Boston

Runner's Alley -36 Hanover Street • Manchester, NH 03101

Offers shoes, clothing, running gear, books, heart rate monitors, watches, water bottles, energy Foods, body glide, track spikes, reflective wear, knee supports, insoles, and more.

George's Apparel -675 Elm Street • Manchester, NH 03101

Fine men's clothing including suits, sport coats, pants, shirts, ties and outerwear. Tuxedo rentals and alterations also available.

Manchester Monarchs Pro Shop -555 Elm Street • Manchester, NH 03101

Dress to show your support of Manchester's hockey team.

Full Spectrum Wellness -55 South Commercial Street • Manchester, NH 03101

Day Spa.

Not So Plain Jane's -155 Dow Street, Suite 102 • Manchester, NH 03101

Full service salon.

Chair Gallery - 850 Elm Street • Manchester, NH 03101

Unique furniture.

New England Sampler, The -42 Hanover Street • Manchester, NH 03101

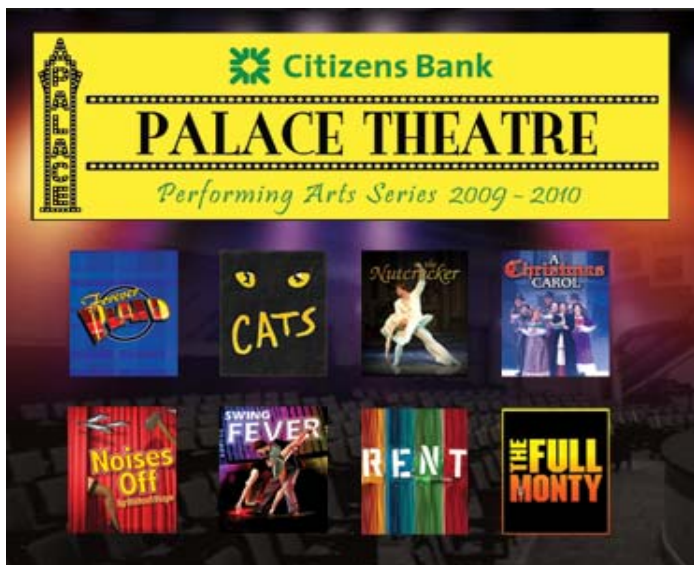
Specialty artisan products including crafts, foods, wines, home accessories and gourmet chocolates.

Elizabeth's on Elm -889 Elm Street • Manchester, NH 03101

Offering fine quality custom jewelry designs and handmade gifts.

OTHER EVENTS HAPPENING DURING YOUR STAY

THE PALACE THEATER:



Located just two short blocks away from the Raddisson Hotel, is Manchester's Palace Theater. On the evening of Friday, April 9, 2010, they will be showing their production of the Broadway smash hit "Rent." This ground-breaking Tony and Pulitzer Prize Award winner reinvented musicals when it debuted in 1996. An inspiring story about friends and artists struggling in New York City's East Village, RENT tackles addiction, poverty, AIDS – and most of all, love

To Get Tickets: 603-668-5588

Or you can go directly into the Palace Theater, Manchester, NH website and follow their prompts for your show selection and to reserve your seats, etc. There will also be performances on Saturday, 7:30, and Sunday at 2:00 pm.

Tickets: \$15.00 to \$45.00 No refunds or exchanges.

VERIZON WIRELESS ARENA:



For those sports fans you may be bringing with you...

Located perpendicular to the Raddisson Hotel and the Center of NH building is the Verizon Arena. On Friday, April 9, 2010 at 7:30 p.m., Manchester's Premier Ice Hockey team will be taking on the Portland Pirates. Depending on location of seats, tickets range from \$11.00 for children to \$21.00. Seniors receive a discount. Tickets available as follows:

Verizon Arena Phone:	603-644-5000
Ticket Master Phone:	800-745-3000
Ticket Master Online:	www.ticketmaster.com

If we can get enough advance interest in this event, we will see what we can do about getting group tickets. Let Vanessa know ASAP.

MADE IN NEW HAMPSHIRE EXPO



One final chance for those NAIW shopaholics in our group.....

Located at the Raddisson Hotel/Center of New Hampshire Expo Hall – literally steps from your hotel room – and you don't even need to venture outdoors! This expo showcases products and services made in New Hampshire. Going on 15 years, the Expo continues to grow with new exhibitors each year. They have 160 exhibitor spaces available in the Expo Center and the spots are filling up fast. Feel free to go out to:

<http://millyardcommunications.com> to see who's coming. *You should have ample time between the Awards luncheon to fit in this shopping opportunity.*

Hours: Friday, April 9, 2010 from 1:00 p.m. – 8:00 p.m.
Saturday, April 10, 2010 from 10:00 a.m. – 8:00 p.m.
Sunday, April 12, 2010 from 10:00 a.m. – 4:00 p.m.

Cost: Adults \$9.00; Seniors \$8.00; Children \$3.00

The Hospitality team will work with the Raddisson Hotel and the folks from Made in NH to obtain advance tickets.